



Document No.:S-E17

TY-OHM ELECTRONIC WORKS CO.,LTD.

METAL GLAZE HIGH VOLTAGE RESISTORS RESISTOR SPECIFICATION

Version : 2007.A

APPROVED BY

APPROVED	REVIEWED	PREPARED
<i>Jack Lo</i> Oct 18, 2007	<i>Jack Lo</i> Oct 18, 2007	<i>Rob Lo</i> Oct 18, 2007

Unauthorized duplication is prohibited

METAL GLAZE HIGH VOLTAGE RESISTORS

1. Applicable Scope:

This standard specification is for use in consumer electronics, computers, telecommunications, control instruments...etc.

2. Part Number:

It is composed by Type, Rated Wattage, Nominal Resistance, Tolerance and Package/Terminal Form. e.g.

<u>RT</u>	<u>1W</u>	<u>10MΩ</u>	<u>J</u>	<u>T/B</u>
Type	Rated Wattage	Nominal Resistance	Tolerance	Package/Terminal Form

2.1 Type :

Metal Glaze High Voltage Resistors are called "RT".

2.2 Rated Wattage:

Shown by "W", such as 1/4W, 1/2W, 1W, 2W.

2.3 Nominal Resistance:

K Ω , M Ω are its unit, which be in accordance with JIS-C6409 article 6 (EIA RS-196A) series.

2.4 Tolerance:

It is measured by Bridge-method at room temperature and expressed by a capital letter.

F = $\pm 1\%$ J = $\pm 5\%$.

2.5 Package/Terminal Form:

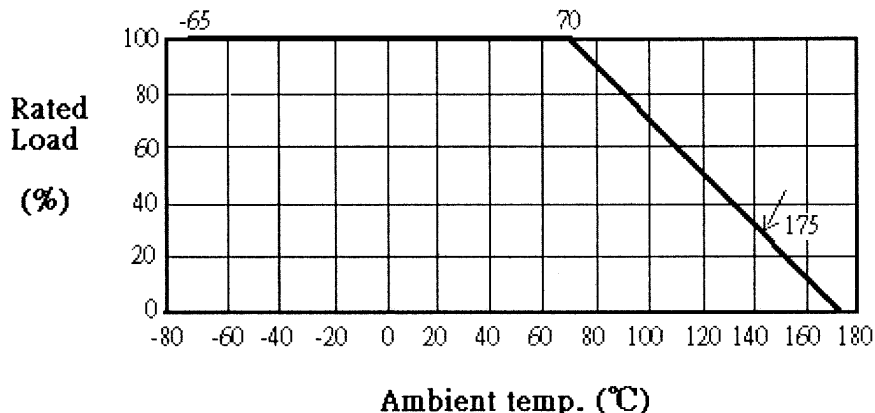
T/R = tape & reel ; T/B = tape in box; Bulk; MG form, F forms.

Remark :RT Series Resistors are RoHS Compliant.

3. Rated Power:

Rated power is the value of Max load voltage specified at the ambient temperature of 70 $^{\circ}$ C, and shall meet the functions of electrical and mechanical performance. When the ambient temperature surpasses above mentioned temperature, the value declines as per following DERATING CURVE.

DERATING CURVE



METAL GLAZE HIGH VOLTAGE RESISTORS

3.1 Rated Voltage:

It is calculated through the following formula:

$$E = \sqrt{P * R}$$

where E: rated voltage (V)

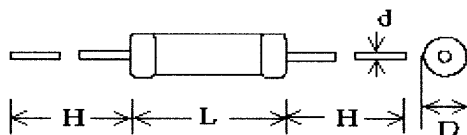
P: rated power (W)

R: nominal resistance value (Ω)

However, in case the voltage calculated exceeds the maximum load voltage, such the maximum load voltage shall be regarded as its rated voltage, means whichever less.

4. Dimension and structure:

4.1 Dimension:



Unit: mm

TYPE	D \pm 0.5	L	H \pm 3	d \pm 0.1	Resistance Range	Max, Permissible Voltage	
						DC	RMS
RT 1/4W	2.4	6.4 \pm 0.5	30	0.6	47K Ω ~ 33M Ω	1600V	1150V
RT 1/2W	3.5	9 \pm 0.5	30	0.65	47K Ω ~ 33M Ω	3500V	2500V
RT 1W	4.5	11 \pm 1	30	0.8	47K Ω ~ 33M Ω	5000V	3500V
RT 2W	5	15 \pm 1	30	0.8	47K Ω ~ 33M Ω	10000V	7000V

© Note: 1. Too low or too high ohmic values can be supplied only case by case.
2. RT 1W & RT 2W are coated by flameproof paint.

4.2 Structure:

4.2.1 Ceramic Rod:

It is made of Forsterite imported from Japan.

4.2.2 Terminal:

Terminal is to be firmly connected with resistors element, both electrically and mechanically, and allow easy soldering.

4.2.3 Coating:

Coating is done by light blue flameproof paint for 1W, 2W type and light green epoxy paint for 1/4W, 1/2W type which is solid enough to be free from looseness, crack and easy breakage. It is also resistant to cleaning and industrial solvents, and the paint shall be limited within 2mm of lead wires from resistor body.

4.2.4 Marking:

Marking is made on resistors surface, by color coding.

METAL GLAZE HIGH VOLTAGE RESISTORS

5. Operating Temperature Range: -65°C ~ 175°C

6. Mechanical Performance:

6.1 Terminal tensile:

To fix the resistor body, a static load of 2.5kgs.(under 1/2W:1kg.) is to be gradually applied into the terminal for 10 seconds without causing any looseness and fall.

6.2 Twist withstand:

To bend the lead wire at the point of about 6mm from resistor body to 90 °, then catch the wire at 1.2 ± 0.4 mm apart from the bent point end and turn it (clockwise) by 360 degrees perpendicular to the resistor axis at speed of 5 seconds per turn, and do the same counterclockwise again which constitute a whole turn. Repeat the turn 2 times without causing any break and looseness.

7. Electrical Performance:

7.1 Resistance Temperature Coefficient:

It shall be within ± 200 ppm/°C.

$$T.C \text{ (ppm/°C)} = \left[\frac{R2 - R1}{R1} \right] \times \left[\frac{1}{T2 - T1} \right] \times 10^6$$

where

R1: resistance value at reference temperature

R2: resistance value at test temp.

T1: reference temp. (usu. 25°C)

T2: test temp. (about 75°C)

7.2 Short Time Over Load:

When the resistors are applied 2.5 times as much as rated voltage for 5 seconds continuously, it shows no evidence of arc, flame...etc. Removing the voltage and place the resistors to the normal condition for 30 minutes, the resistance value change rate between pre-and-post test shall be within $\pm 1\%$.

7.3 Insulation Character :

Resistors are located in a V-shaped metal trough. Using the DC 500V megger instrument 2 poles to clutch either side of lead wires and metal trough, measuring the Insulation Resistance which shall be over $1000M\Omega$.

7.4 Voltage Withstanding:

Resistors are located in a V-shaped metal trough. Applying AC 350V for one minute and should find no physical damage to the resistors, such as arc, char ...etc.

7.5 Load Life:

The resistors arrayed are sent into the 70°C oven, applying rated voltage at the cycle of 1.5 hours ON, 0.5 hour OFF for 1000_{0}^{+48} hours in total. Then, after removing the voltage, take the resistors out of the oven and left under normal temp. for one hour cooling. The resistance value change rate between pre-and-post test shall be within $\pm 3\%$.

METAL GLAZE HIGH VOLTAGE RESISTORS

7.6 Moisture-proof Load Life:

The resistors arrayed are placed into a constant temp./humidity oven at the temp. of $40 \pm 2^\circ\text{C}$ and the humidity of 90~95%, then rated power is applied for 1.5 hours and cut off for 0.5 hour. The similar cycle will be repeated for 500_{-0}^{+24} hours in total (including cut-off time). Then remove the voltage, taking the resistors out of the oven and leaving them at room temp. for one hour. The resistance value change rate between pre-and-post test shall be within $\pm 3\%$. There also shall be no evidence of remarkable change on appearance, and the marking shall not be illegible.

7.7 Solder-ability:

The leads with flux are dipped in a melted solder of $235 \pm 5^\circ\text{C}$ for 2 seconds, more than 95% of the circumference of the lead wires shall be covered with solder.

7.8 Resistance to Soldering Heat:

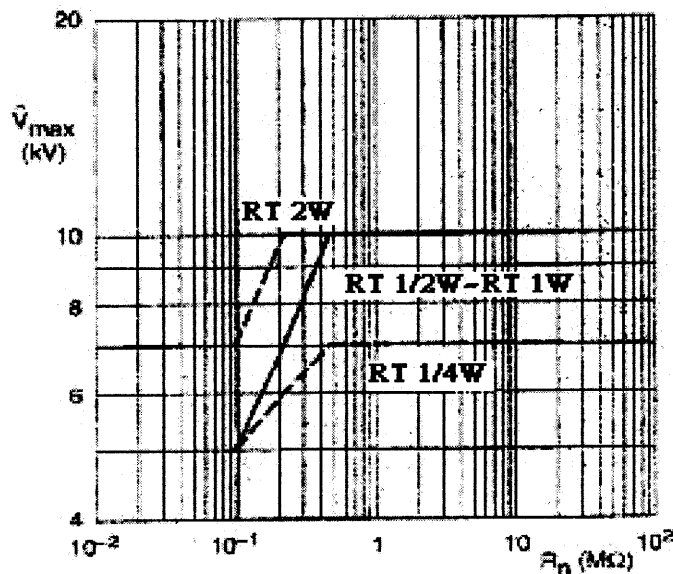
Two leads are together dipped in a melted solder of $270 \pm 5^\circ\text{C}$ for 10 ± 1 seconds, or $350 \pm 10^\circ\text{C}$ for 3.5 ± 0.5 seconds, Then remove the resistors and leaving them at room temp. for one hour. The resistance value change rate between pre-and-post test shall be within $\pm 1\%$.

7.9 Incombustibility(only for 1W,2W):

The resistors are applied the power of 16 times the rated wattage for 5 min. and shall not get flame.

7.10 Pulse Loading Capability:

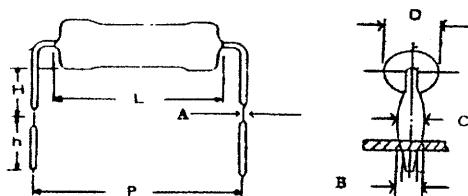
In accordance with IEC 60065 chapter 14.1;50 discharges from a 1 nF capacitor charged to V_{max} ;12 discharges/minute(drift $\Delta R/R \leq 2\%$)



METAL GLAZE HIGH VOLTAGE RESISTORS

8. Others:

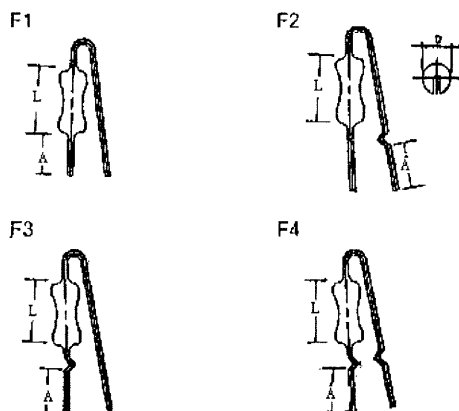
8.1 MG Form:



Unit: mm

RT	$D \pm 0.5$	$L \pm 0.5$	P	H	$h \pm 1$	$A \pm 0.02$	$B \pm 0.05$	$C \pm 0.2$
1/2W	3.5	9	15 ± 1.5	7 ± 1	4.5	0.23	0.8	1.2
1W	4.5	11	15 ± 1.5	7 ± 1	4.5	0.25	1	1.4
2W	5	15	20 ± 2	10 ± 2	4.5	0.25	1	1.4

8.2 F Form:



Unit: mm

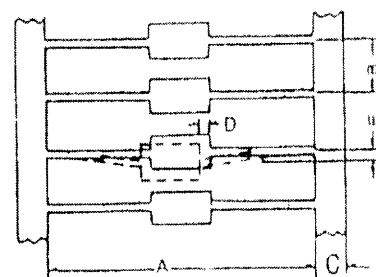
RT	$D \pm 0.5$	$L \pm 0.5$	$A +1/-0.5$	Applicable
1/2W	3.5	9	3.5	F1-F4
1W	4.5	11	3.5	F1-F4
2W	5	15	3.5	F1-F4

8.3 Packing:

8.3.1 Taping Specifications :

Unit: mm

RT	Size		A	B	$C \pm 1$	D Max	E Max
	Type						
$\leq 1/2W$	T-52		52 ± 1	5 ± 0.5	6	0.6	1.2
1W	T-63		63 ± 1	5 ± 0.5	6	0.6	1.2
2W	T-63		63 ± 1	10 ± 1	6	0.6	1.2
	T-76		76 ± 1.5	10 ± 1	6	0.6	1.2

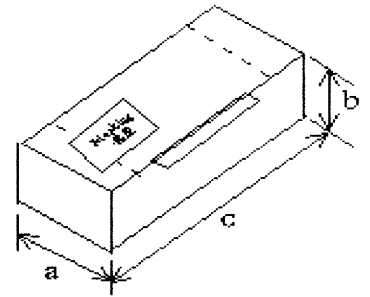


METAL GLAZE HIGH VOLTAGE RESISTORS

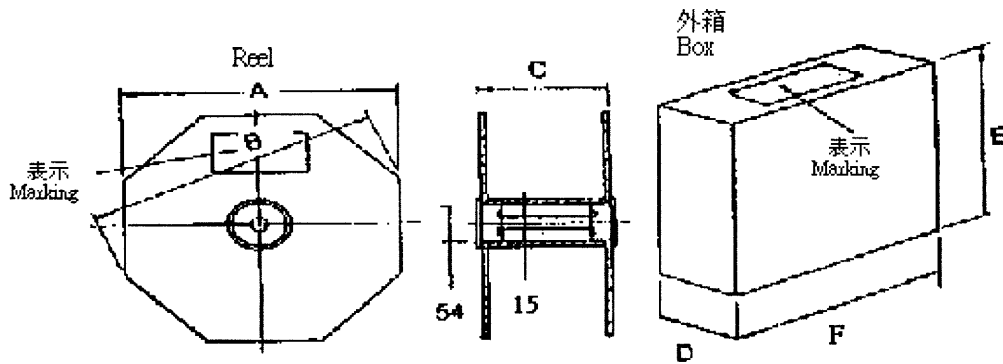
8.3.2 Tape in Box:

Unit: mm

RT	Type	QTY PER BOX	a	b	c
1/4W	T-52	5,000	75	100	255
1/2W	T-52	1,000	75	55	255
1W	T-63	1,000	85	105	260
2W	T-63	1,000	85	105	260



8.3.3 Tape & Reel:



Unit: mm

RT	Type	QTY PER REEL	A	B	C	D	E	F
1/4W	T-52	5,000	285	310	75	80	295	295
1/2W	T-52	5,000	305	330	75	90	310	310
1W	T-63	2,500	285	310	75	80	295	295
2W	T-63	1,000	285	310	75	80	295	295
	T-76	1,000	285	310	90	105	295	295