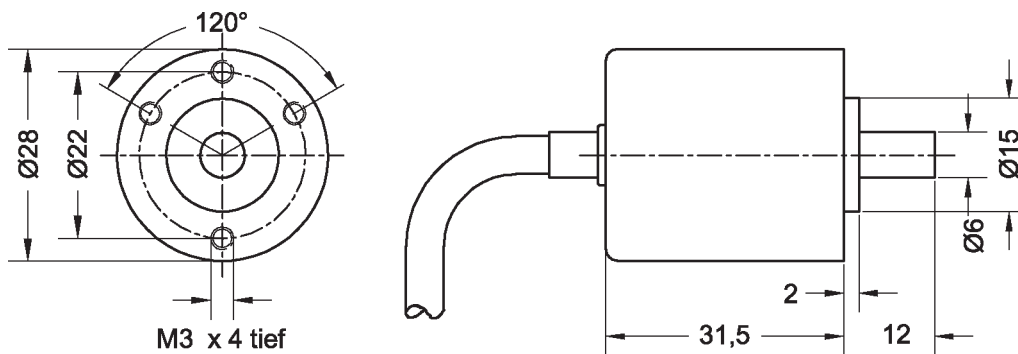


- Resolution 10 bit per 360°
- Contactless sensor technologie
- Protection class IP50
- Nominal operation voltage 24 VDC
- Synchronous serial interface
- Programmable setting to zero point
- 2 Precision ball bearing



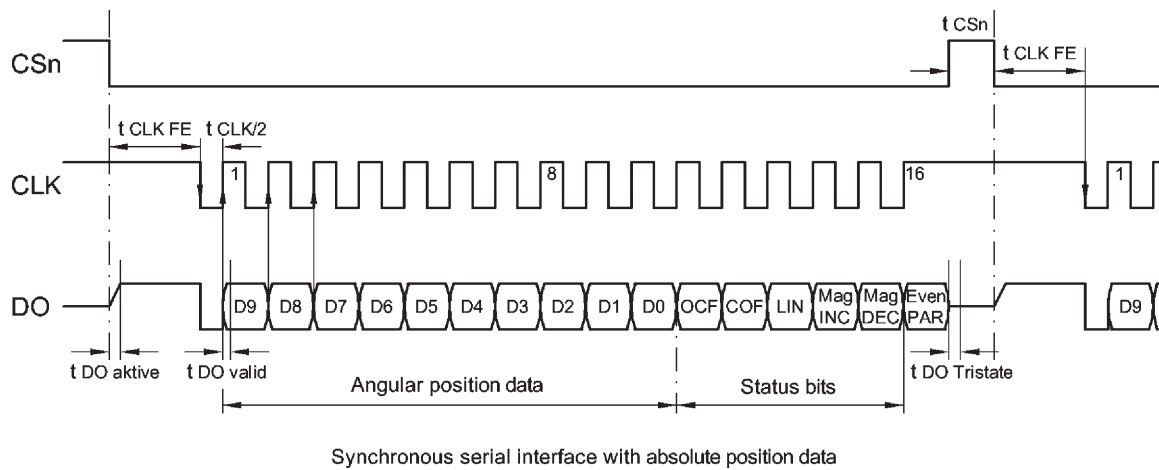
Attractive Price und high life time makes this product suitable for for many applications.

**Dimensioned Drawing**



Electrical specifications		
Resolution	[Positions/turn]	1024 (10 bit)
Output signal		synchronous serial interface
Update-Rate	[ms]	0,1ms
Supply voltage	[V]	24 VDC ±10%
Power consumption (ohne Last)	[mA]	<25
Mechanical specifications		
Mechanical rotation angle		360° without stop
Bearing		Ball bearing
max. operating speed	[rpm]	10000
Weight	[g]	ca. 40
Material		
Material housing		Aluminium
Material shaft		stainless steel
Ambient specifications		
Protection class (shaft / housing)		IP50 / IP64
Operating temperature range	[°C]	-25 ... +85
Storage temperature range	[°C]	-40 ... +85

Timing Diagramm



Electrical connections (cable length 2m)

Type	GNDIN	VCC	CSN	CLK	DO	PROG	GND	PWN	Screen
colour	WH	BN	GN	YE	GY	PK	BU	FD	

Order code

MABS28-1024-5	(MABS28, Auflösung 1024 Schritte (10Bit), 5 V Betriebsspannung)
MABS28-1024-24	(MABS28, Auflösung 1024 Schritte (10Bit), 24 V Betriebsspannung)