

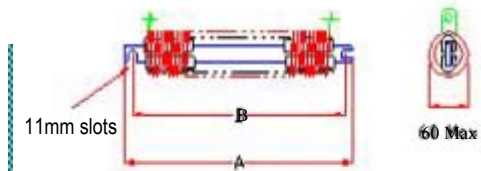


Data Sheet: Edge-Coil - Element

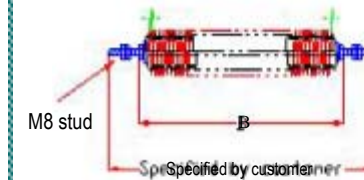
Resistance value (Ω) +/- 10%										Max. Continuous Current Rating @		
Size	E1	E2	E3	E4	E5	E6	E7	E8	E9	375°C	455°C	
Material	G1	0.044	0.1	0.16	0.22					85	104	
	G4A	0.105	0.234	0.363	0.493	0.622	0.75			55	66	
	G5	0.122	0.273	0.423	0.57	0.72	0.87	1.02	1.17	45	50	
	G6	0.16	0.354	0.548	0.74	0.94	1.13	1.325	1.52	37	44	
	G7	0.21	0.461	0.715	0.97	1.22	1.48	1.73	1.98	32	37	
	G8	0.23	0.514	0.80	1.08	1.36	1.64	1.93	2.21	27	32	
	G9	0.33	0.735	1.14	1.54	1.95	2.35	2.75	3.16	23	28	
	G10	0.46	1.03	1.60	2.16	2.73	3.3	3.86	4.43	20		
	G12	0.7	1.6	2.45	3.3	4.2	5.0	5.9	6.8	12		
Dimensions (mm)												
E type	A	130	205	275	345	420	490	565	635	710		
	B	105	180	250	320	395	465	540	610	685		
ES type	B	105	175	250	325	400	470	545	615	690		
EP type	A	136	206	281	356	431	501	576	646	721		
	B	120	190	265	340	415	485	560	630	705		

Note: Edge-coil resistors are supplied as standard E type design unless otherwise requested by the customer. Dimensions are nominal value.

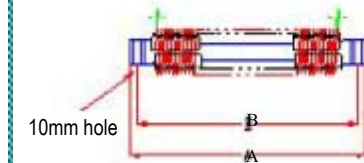
Design: Standard Unit



Standard: E Type



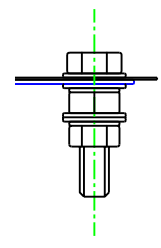
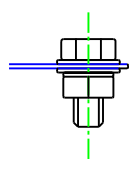
Through bolt mounting: ES Type



Vertical fixing slot: EP Type



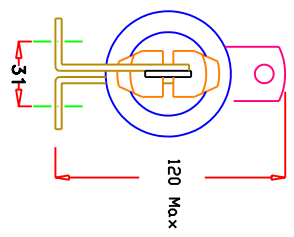
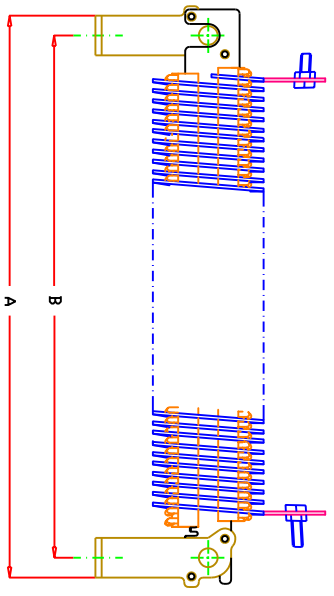
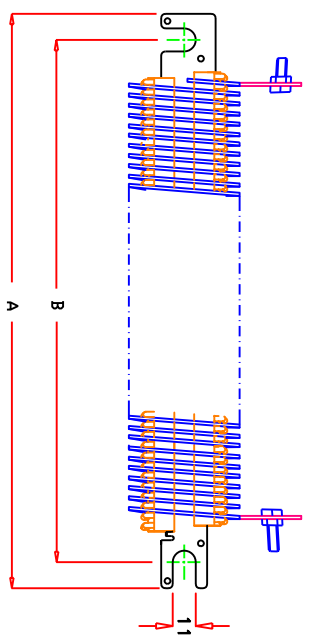
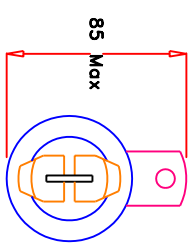
IF IN DOUBT ASK



Terminal Tapping Type B
Intermediate Terminals only
M6 for up to 24 Amps
M8 from 28 Amps

Terminal Tapping Type A
Outer Terminals only
M6 for up to 24 Amps
M8 from 28 Amps

SIZE	E1	E2	E3	E4	E5	E6	E7	E8	E9
'A'	130	205	275	345	420	490	565	635	710
'B'	105	180	250	320	395	465	540	610	685



Option (1): Unmounted

Option (2): Feet Mounted

B	Redrawn	C.P.	23.02.06		
A	Height changes for G5 to G12	C.P.	30.06.04		
	Original Issue	C.P.	19.12.01		
ISSUE	MODIFICATION	SIGNR	DATE		

TOLERANCES		DRN	C.P.	TITLE:		DRAWING NO.	REV.
PLACES OF DECIMAL	M.M. TOLERANCES	CH'D	DATE	Edge-Coil 'E' Type Resistor		EL01777	B
0	± 1		Dec.2001	With or without Mounting Feet			
1	±0.5	JOB					
2	±0.15	SCALE		N.T.S.			
3	±0.050	SHEET		1 of 1			

