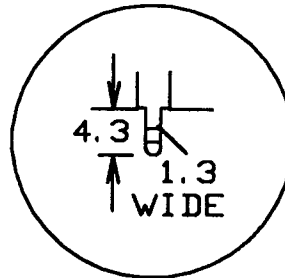
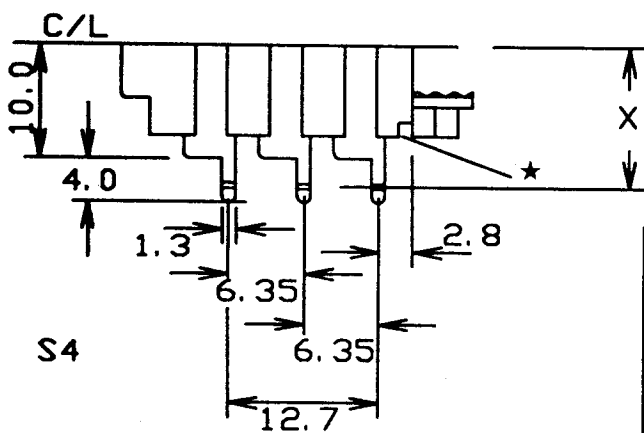
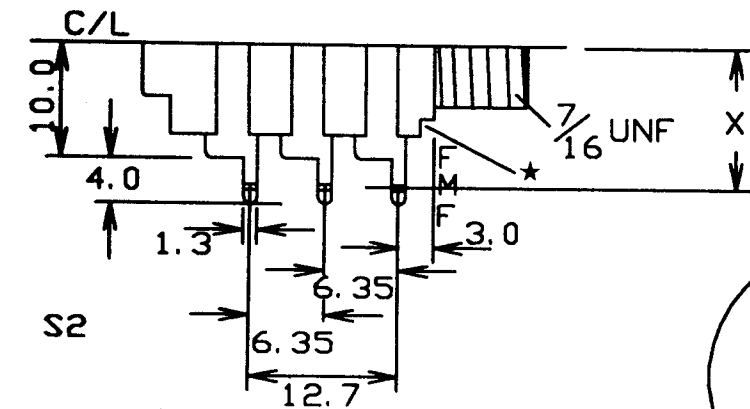
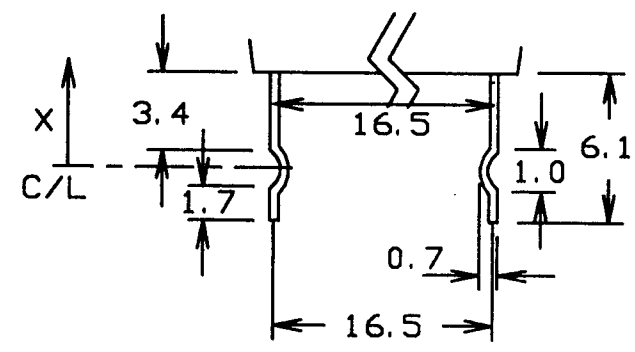


ISS.	AMEND	DATE
1.	1ST DRAWN	7/4/93
2.	NOTE ADDED	21/4/93
3.	0.7 DIM ADDED	25/6/96
4.	SEE MOD 0214	9/8/96
5.	KINK DIMS REVISED	23/12/96
6.	PCA BACK TO ORIG	3/2/97
7.	PC-C AMENDED	24/2/97

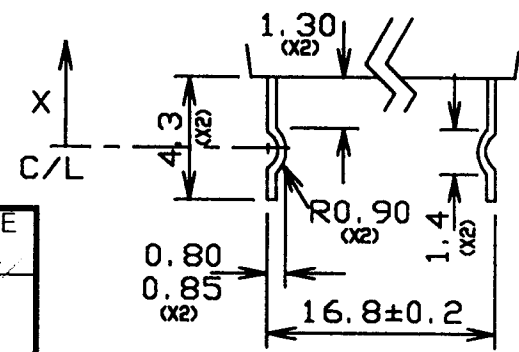


PC TYPE C

P/No.	X DISTANCE FROM C/L
CL 1169	9.9
CL 12391	9.9
CL 13107	9.9
CL 1311	9.9
CL 13343	9.9
CL 13354	9.9
CL 1232UK	11.8



PC-A 'KINKED'



PC-C 'KINKED'

KINKS CAN BE APPLIED TO ALL VERSIONS OF S2 AND S4 PC-A AND PC-C. THIS DRWG ILLUSTRATES KINK DIMS ONLY AND IS NOT INTENDED TO SHOW ALL POSSIBLE VARIANTS OF CONTACT CONFIGURATION.

★ THIS RECESS IS TO FACILITATE MOUNTING IN FLOWSOLDER JIGS.

FOR KINKED LEG JACK SOCKETS, USE  $1.5 \pm 0.05$  Ø P.C.B. HOLE.

TOLERANCE	
NO DEC. PLACE	±
1 DEC PLACE	± 0.2
2 DEC PLACE	±
DIA OF HOLES	±
ANGLES	±
UNLESS OTHERWISE STATED	

DIMENSIONS IN MILLIMETRES UNLESS OTHERWISE STATED. WORK TO DIMENSIONS. DO NOT SCALE DRAWING. 3rd ANGLE PROJECTION. REMOVE BURRS.

WHERE USED S2 & S4

SCALE N.T.S.

Cliff Electronic Components, Inc.  
4876 East Second Street, Benicia, CA 94510 USA  
Tel: (707) 746 8090 Fax: (707) 746 8092

MATERIAL NYLON 6 / 10% NICKEL SILVER NS 107 VPN 195/220	
FINISH	AS MOULDED
DRAWN	C.A.M.J.
APPD.	R.W.T.

TITLE **S2 / S4 KINKED SOCKETS**  
DRWG. No. **CL 12391**

FORM: A4DRWGH