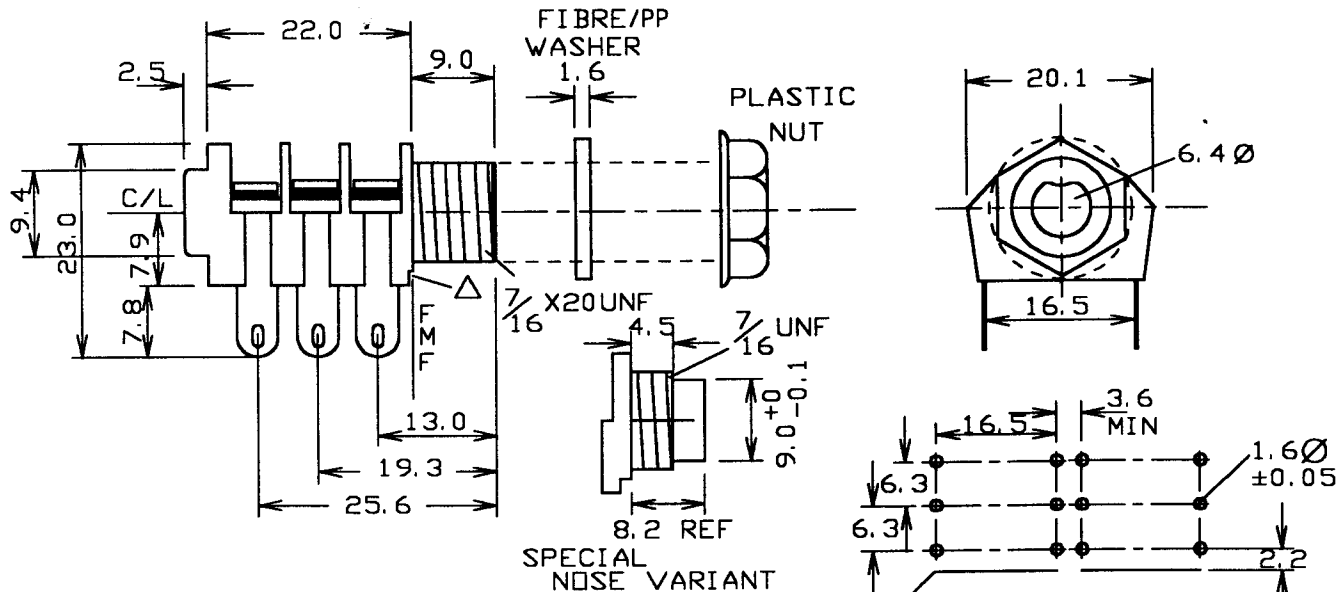


ISS	AMEND	DATE
1	1st DRAWN	28/4/94
2	PCA/S REDRAWN	13/4/95
3	SEE MOD 0214	9/8/96
4	SEE MOD 0221	14/3/97
5	22.0 WAS 22.8	16/9/97
6	WASHER MTL	29/6/01



△ THIS RECESS IS TO FACILITATE MOUNTING IN FLOWSOLDER JIGS.

NOTE
S2A2. ALL JACKS WITH A MAKE CONTACT HAVE ALL CONTACTS PLATED WITH A LOW LOSS FINISH AS STD.

← BACK OF SOCKET		→ FRONT OF SOCKET	
<p>SPECIAL REVERSED CUT CONTACT</p> <p>12.5 TO C/L</p> <p>NOTE MODEL PCA/SA HAS 10mm TO C/L</p> <p>PCA/S/REV</p>	<p>SPECIAL</p> <p>12.5 TO C/L</p> <p>3.2</p> <p>1.3 WIDE</p> <p>PC TYPE A/S</p>	<p>10.0 TO C/L</p> <p>4</p> <p>3</p> <p>1.3 WIDE</p> <p>PC TYPE A</p>	<p>1.3</p> <p>4.1</p> <p>1.3 WIDE</p> <p>PC TYPE B</p>
<p>4.3</p> <p>1.3 WIDE</p> <p>PC TYPE C</p>	<p>1.30 (x2)</p> <p>4.3 (x2)</p> <p>0.80</p> <p>0.85 (x2)</p> <p>R0.90 (x2)</p> <p>1.4 (x2)</p> <p>16.8 ± 0.2</p> <p>PC-C 'KINKED'</p>	<p>15mm TO C/L</p> <p>4.0</p> <p>1.3 WIDE</p> <p>PC TYPE D</p>	<p>17.5 TO C/L</p> <p>4.0</p> <p>1.3 WIDE</p> <p>PC TYPE E</p>

MAX PANEL THICKNESS
5.4mm FOR KINKED LEGS
USE 1.5 ± 0.05mm Ø HOLE.

Tolerance
NO DEC. PLACE ±
1 DEC. PLACE ± 0.2
2 DEC. PLACE ±
DIA. HOLES ±
ANGLES ± 1/2°
UNLESS OTHERWISE STATED

WHERE USED F.R.

SCALE N.T.S.

DIMENSIONS IN MILLIMETERS UNLESS OTHERWISE STATED. WORK TO DIMENSIONS. DO NOT SCALE DRAWING. 3rd ANGLE PROJECTION. REMOVE BURRS. IF IN DOUBT ASK.

Cliff Electronic Components, Inc.
4876 East Second Street, Benicia, CA 94510 USA
Tel: (707) 746 8090 Fax: (707) 746 8092

MATERIAL NYLON / NIAG / FIBRE / PP
FINISH AS MOULDED / MICROFINISH
DRAWN C.A.M.J. APPD. RWT

TITLE S2A JACK SOCKET / BBB / PC-C

DRWG. No. CL 1227

FORM: A4DRWGH